

TO LAST

FORM 5080



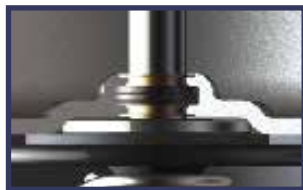
MGM Brakes

BUILT



Dual-Thread Release Bolt MJB Models

"Dual-Thread" manual release bolt: a MGM Brakes patented design feature; provides minimal bolt protrusion at maximum release, allowing for installation in tight areas.



Center-Seal - TRB Models

Multi-lipped, pressure activated seal – MGM Brakes exclusive - molded from specially formulated low temperature-resistant Nitrile Rubber, providing long-term protection against air leaks. Nylon guides eliminate metal to metal contact and premature failure in this critical area.



External Breather-Tube

Vents air from inside the protected area of the non-pressure chamber to effectively prevent entry of liquid and solid corrosive contaminants that can cause premature failure of the spring brake chamber.



AIR DISC BRAKE ACTUATORS



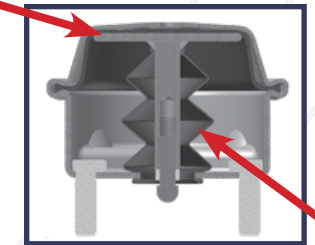
*Superior
Performance
from a name
you can trust!*

MGM Brakes
A Division of Indian Head Industries, Inc.
www.mgmbrakes.com
e-mail: mail@mgmbrakes.com

Internal Dust Boot

MGM's durable internal dust boot, a component of all air disc chambers, effectively seals out liquid and solid corrosive contaminants from entering the air disc brake assembly, preventing premature failure of the air disc caliper components.

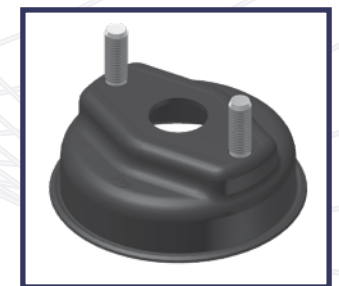
Stainless Steel
Push-Rod/Piston Plate



Internal Dust Boot

Stainless Steel Push-Rod/ Piston Plate

MGM is the only manufacturer utilizing internal stainless steel components to eliminate corrosion at the dust boot interface. This feature is optional and available upon request.



Non-Pressure Housing

Rugged heavy gauge formed steel "diamond" bottom design. Epoxy-coated for total corrosion protection with welded mounting studs.

MGM Brakes always has a model best suited to meet your needs!

MGM Air Disc Brake Actuators offer the industry an unparalleled variety of models perfect for nearly any application. From our CSB Service Chamber, TRB Double Diaphragm Series and MJB Piston Diaphragm Series, every model provides the advantages you need to maintain braking reliability and longer-life braking performance on today’s heavy-duty commercial vehicles.

CSB service chambers offer the ultimate in dependability and long service life with heavy-gauge formed steel components, durable epoxy-coating for reliable corrosion protection and designed to take on the toughest jobs in the harshest environments. Stainless steel push-rod assemblies are also available as an optional feature which eliminates the possibility of corrosion at the push-rod and dust boot interface, providing additional caliper moisture intrusion protection.

TRB double diaphragm spring brakes offer the added feature of an “External Breather-Tube” that vents air from the inside protected area of the service chamber to effectively prevent entry of liquid and solid contaminants that can cause premature failure of the spring brake chamber; and a heavy-gauge formed steel mounting base, making the TRB model the perfect choice for tough operating environments. Stainless steel push-rod assemblies are also available as an optional feature which eliminates the possibility of corrosion at the push-rod and dust boot interface, providing additional caliper moisture intrusion protection.

MJB model spring brakes, with their compact design: smaller diameter, and shorter overall height delivers greater stopping and parking-force/output power than double diaphragm actuators of similar size. Featuring the MGM Patented “Dual-Thread Release Bolt” design, the MJB model will fit into tight areas where other spring brakes can’t due to protrusion of the typical release bolt. Built for dependable, trouble-free service, the MJB model is ideally suited for severe operations and environments. Stainless steel push-rod assemblies are also available as an optional feature which eliminates the possibility of corrosion at the push-rod and dust boot interface, providing additional caliper moisture intrusion protection.

Air disc brakes are virtually impossible to visually inspect (and difficult to diagnose when there is a problem). The MGM e•STROKE® brake monitoring system for disc brakes monitors the proper operation of these hidden brake components and can identify brake problems that cannot be detected by visual inspection. Let MGM e•STROKE® for air disc be your eyes and ears for safety! Contact your MGM Brakes Sales Representative for more information on this innovative product offering to compliment your air disc brakes.



CSB



TRB



MJB

Air Disc Actuator Product Offering & Competitor Cross Reference

Popular MGM Service Actuators for Air Disc Brakes						
Size	MGM Model	MGM P/N (SAE)	MGM P/N (Metric)	Bendix P/N	TSE P/N	Haldex P/N
16	CSB16D	CSB16D051	CSB16D049	K028226	16HSCND2-XXX	SC16D
18	CSB18D	CSB18D051	CSB18D049	K028022	18HSCND2-4026	SC18D
20	CSB20D	CSB20D051	CSB20D049	K028225	20HSCND2-3630	SC20D
22	CSB22D	CSB22D051	CSB22D049	K028238	22HSCND2-3631	SC22D
24	CSB24D	CSB24D051	CSB24D049	K028252	24HSCND2-3632	SC24D
Other part numbers (custom options) available: Call MGM customer service						

Popular MGM Double Diaphragm Parking Actuators for Air Disc Brakes						
Size	MGM Model	MGM P/N (SAE)	MGM P/N (Metric)	Bendix P/N	TSE P/N	Haldex P/N
1624	TRB1624DT	TRB1624DT051	TRB1624DT049	K042457	1616HTLD2-3627 & 1624TLD2H	GC1624D
1824	TRB1824DT	TRB1824DT051	TRB1824DT049	K043329 K132352 K026453 K043312 K065544	1816HTND2-3669 & 1824TND2H	GC1824D
2024	TRB2024DT	TRB2024DT051	TRB2024DT049	K041960	2016HTND2-3710 & 2024TND2H	GC2024D
2224	TRB2224DT	TRB2224DT051	TRB2224DT049	K043148	2224TND2H	GC2224D
2424	TRB2424DT	TRB2424DT051	TRB2424DT049	K043270	2424TND2H	GC2424D
2430	TRB2430DT	TRB2430DT051	TRB2430DT049	N/A	2430TLD2H	N/A
Other part numbers (custom options) available: Call MGM customer service						

Popular MGM Piston Diaphragm Parking Actuators for Air Disc Brakes						
Size	MGM Model	MGM P/N (SAE)	MGM P/N (Metric)	Bendix P/N	*TSE P/N	Haldex P/N
1624	MJB1624DT	MJB1624DT051	MJB1624DT049	K026731	1624HTND2-XXX	N/A
1824	MJB1824DT	MJB1824DT051	MJB1824DT049	K025670	1824HTND2-3628	N/A
2024	MJB2024DT	MJB2024DT051	MJB2024DT049	K025669	2024HTND2-3626	N/A
2224	MJB2224DT	MJB2224DT751	MJB2224DT049	K026737	2224HTND2-XXX	N/A
2424	MJB2424DT	MJB2424DT751	MJB2424DT049	K026734	2424HTND2-3629	N/A
					*(HOT Double Diaphragm Not Piston)	
Other part numbers (custom options) available: Call MGM customer service						

NOTE: Cross Reference applies to SAE brakes only. For additional information, go to <http://bit.ly/crossreference>.