

MGM Brakes

A Division of Indian Head Industries, Inc.

TECHNICAL BULLETIN

SUBJECT: EB 11-001 e-Stroke Diagnostic Program Users Guide

The e-Stroke Diagnostic Program (P/N 8091202) may be used to acquire the following e-Stroke System information:

- CCM Information: Software Version, Configuration, Serial Number
- Current Wheel Specific Brake, Lining & Disc Caliper Running Clearance Status
- Stored Brake Fault History
- System & J1939 / J1708 Connection Status

P/N 9090109 - RS-232 Diagnostic Program Kit Contents:

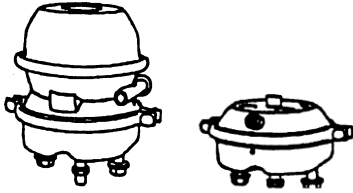
1. 8090091 – Technical Manual & Diagnostic Program USB Drive,
Contains 8091202 Diagnostic Firmware
2. 8290220 – 10 ft RS-232 Diagnostic / Programming Harness
3. 8090090 – USB High Speed Serial Adapter Harness
4. 9494005 – e-STROKE Bulletin – EB 11-001
5. 8290561 – Carrying Case for All Above Diagnostic Components

* NOTE: P/N 9090109 Functional with 8091202 Diagnostic Firmware at 250 kbps
& 500 kbps [SAE J1939 Baud Rate](#) due to direct connection to CCM.

P/N 9090111 - SAE J1939 Diagnostic Program Kit Contents:

1. 8090091 – Technical Manual & Diagnostic Program USB Drive,
Contains 8091202 Diagnostic Firmware
1. 8290304 – SAE J1939 Diagnostic Harness, 9-Pin
2. 8090097 – USB / CAN Adapter
3. 8290239 – Harness, New Flyer Adapter
4. 8290561 – Carrying Case for All Above Diagnostic Components
5. 9494005 – e-STROKE Bulletin – EB 11-001

* NOTE: P/N 9090111 Functional with 8091202 Diagnostic Firmware at 250 kbps
[SAE J1939 Baud Rate ONLY!](#)



MGM Brakes

A Division of Indian Head Industries, Inc.

TECHNICAL BULLETIN

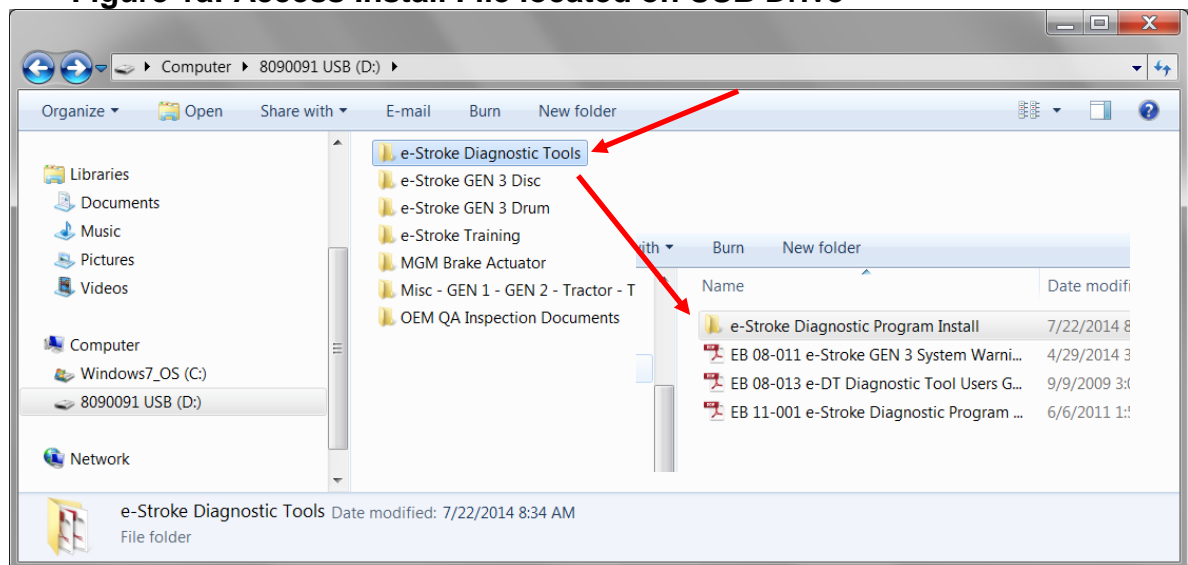
SUBJECT: EB 11-001 e-Stroke Diagnostic Program Users Guide

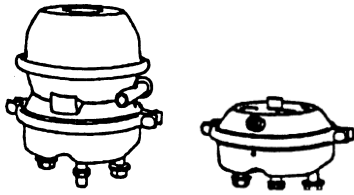
1.0 Program Install Instructions:

Note: Follow Section 4 to verify the e-Stroke diagnostic program application file prior to installing.

1.1. Access the contents of the P/N 8090091 USB Drive on the computer which the program is to be installed.

Figure 1a: Access Install File located on USB Drive





MGM Brakes

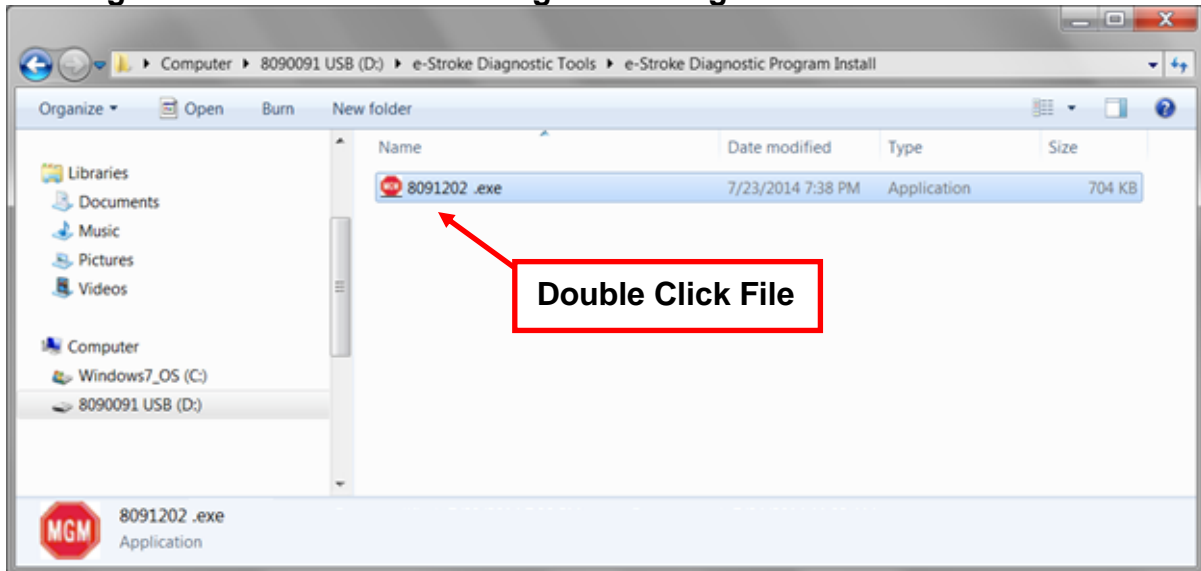
A Division of Indian Head Industries, Inc.

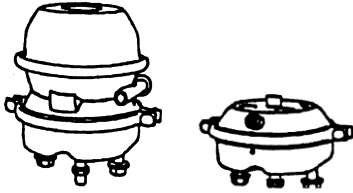
TECHNICAL BULLETIN

SUBJECT: EB 11-001 e-Stroke Diagnostic Program Users Guide

1.2. Double (left) Click the **8091202** file to begin the installation.

Figure 1b: Select e-Stroke Diagnostic Program Install File





MGM Brakes

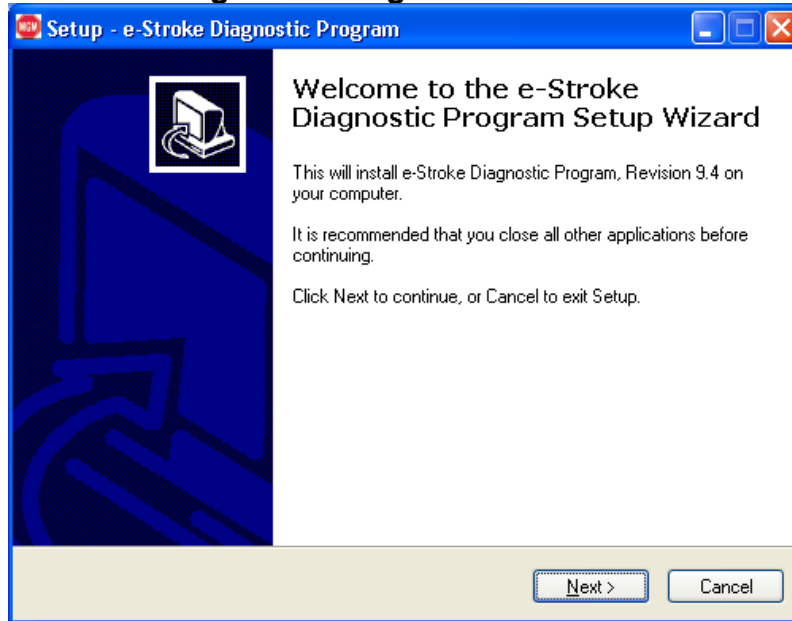
A Division of Indian Head Industries, Inc.

TECHNICAL BULLETIN

SUBJECT: EB 11-001 e-Stroke Diagnostic Program Users Guide

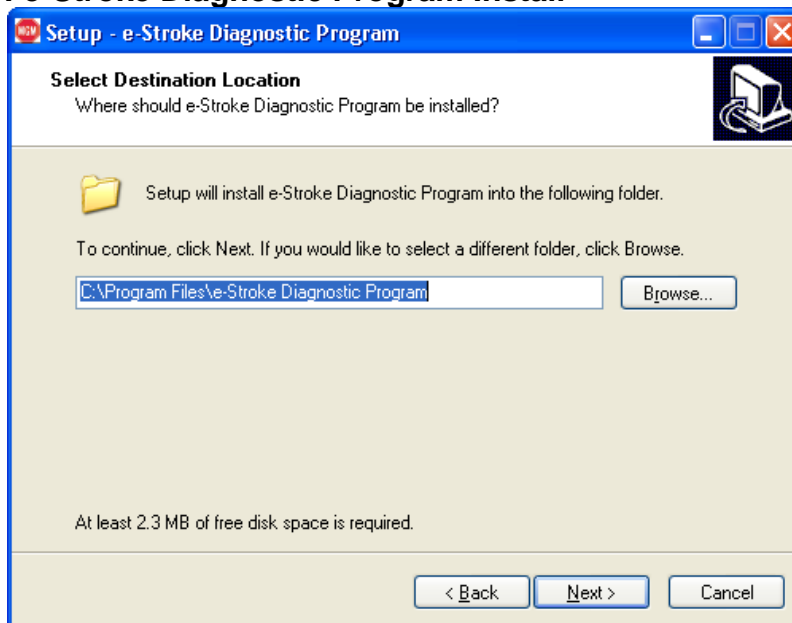
1.3. Double (left) Click the *Next* button to Start the Install process.

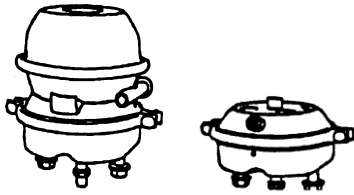
Figure 2: e-Stroke Diagnostic Program Install



1.4. Double (left) Click the *Next* button to accept the default Install Location.

Figure 3: e-Stroke Diagnostic Program Install





MGM Brakes

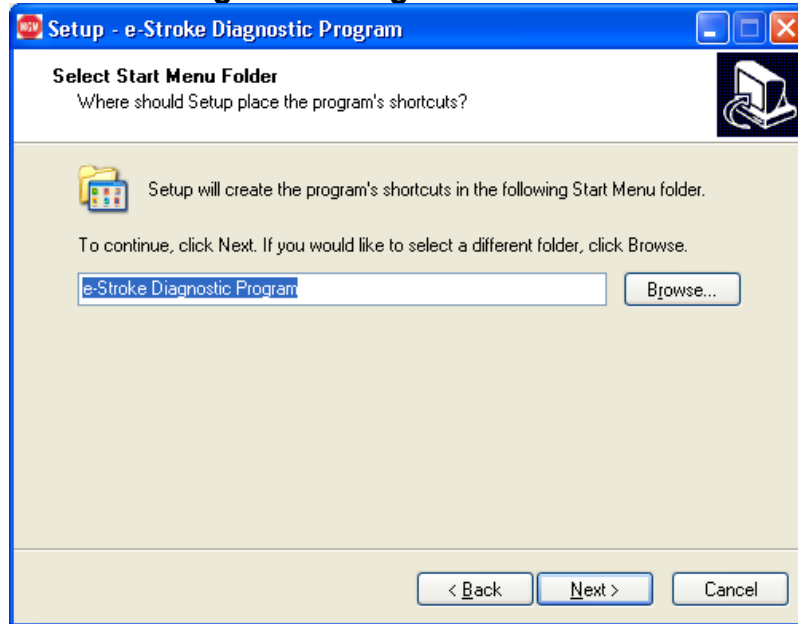
A Division of Indian Head Industries, Inc.

TECHNICAL BULLETIN

SUBJECT: EB 11-001 e-Stroke Diagnostic Program Users Guide

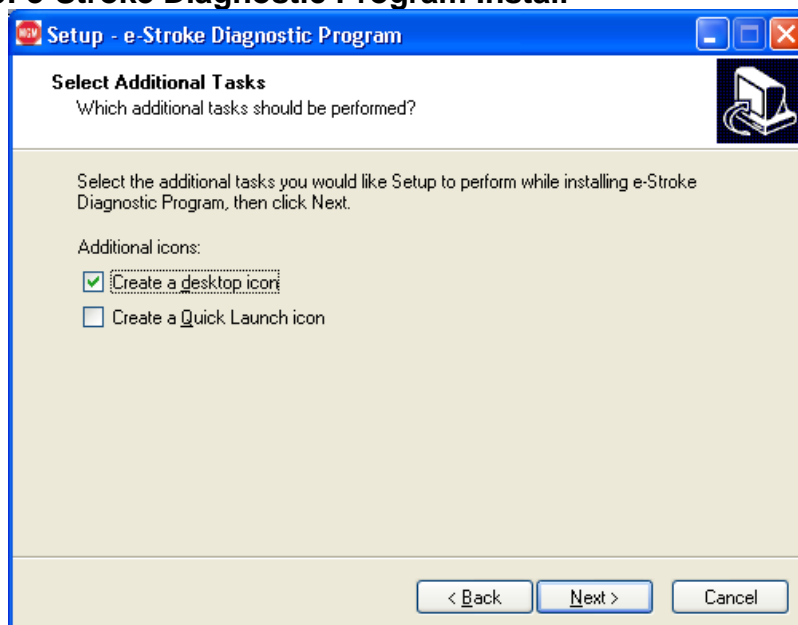
1.5. Double (left) Click the *Next* button to accept the default Folder Name.

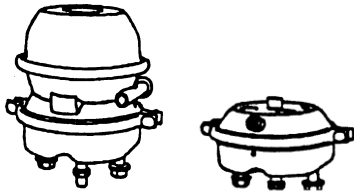
Figure 4: e-Stroke Diagnostic Program Install



1.6. Check the box next to “*Create a desktop icon*” and Double (left) Click the *Next* button to accept the Additional Task.

Figure 5: e-Stroke Diagnostic Program Install





MGM Brakes

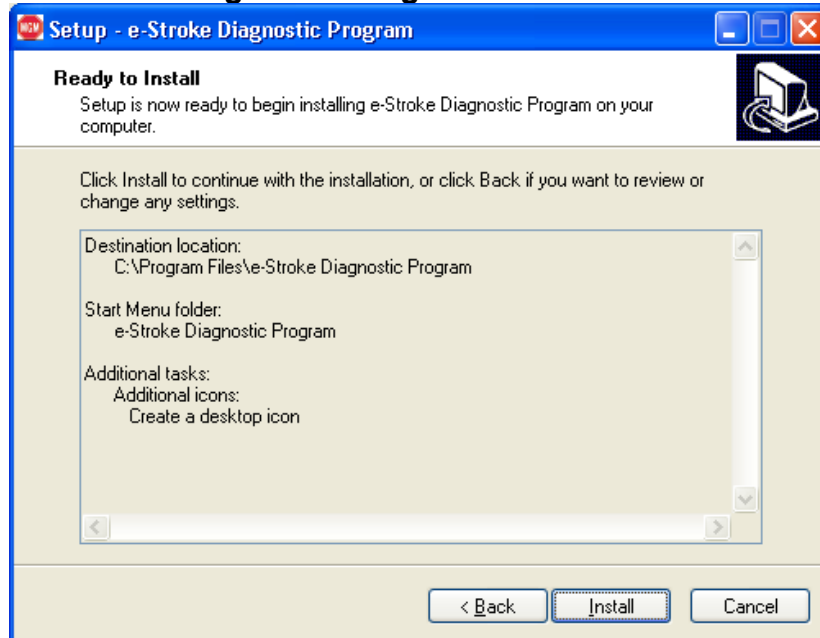
A Division of Indian Head Industries, Inc.

TECHNICAL BULLETIN

SUBJECT: EB 11-001 e-Stroke Diagnostic Program Users Guide

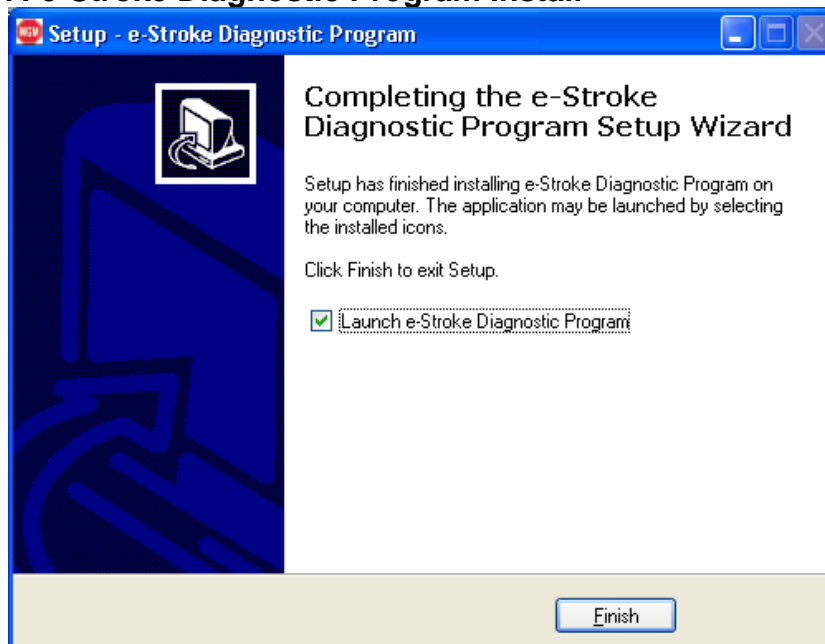
1.7. Double (left) Click the *Install* button to continue with the Installation.

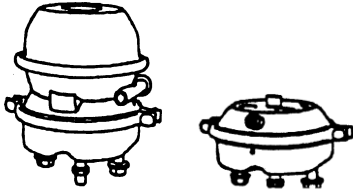
Figure 6: e-Stroke Diagnostic Program Install



1.8. Double (left) Click the *Finish* button to complete the Install.

Figure 7: e-Stroke Diagnostic Program Install





MGM Brakes

A Division of Indian Head Industries, Inc.

TECHNICAL BULLETIN

SUBJECT: EB 11-001 e-Stroke Diagnostic Program Users Guide

2.0 Harness Connections:

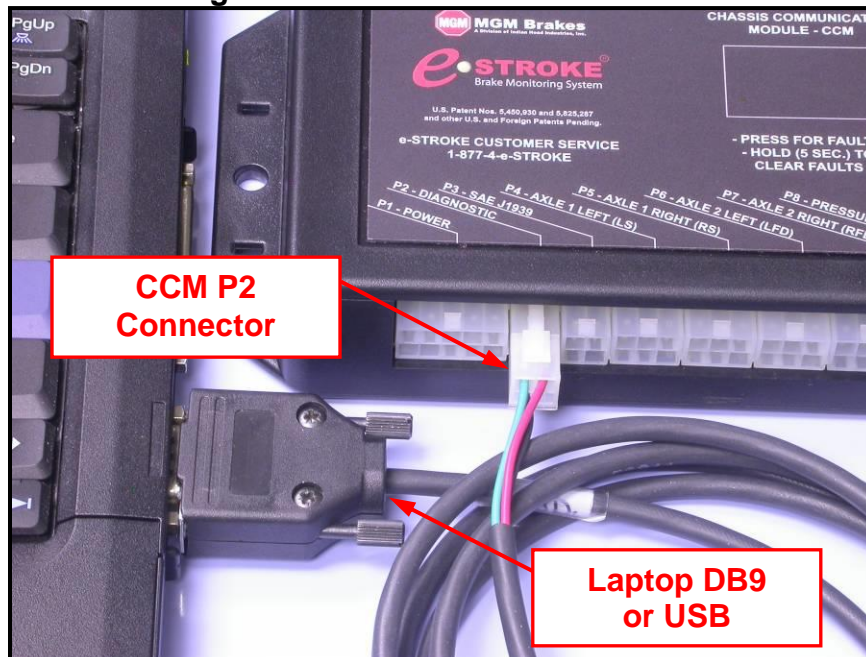
2.1. RS-232 Diagnostic Connection:

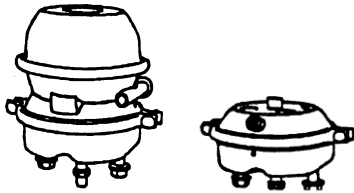
Diagnostic Harness P/N 8290220 connects the computer to the e-Stroke CCM. Plug the White 4-Pin connector into the CCM P2 connector. Connect the DB9 connector into the computers serial COM port. See Figure 8 below.

2.1.1. If a serial COM port is not available then the USB High Speed Serial Adapter Harness P/N 8090090 must be used. Simply plug the DB9 connectors together, and then plug the adapter harness USB connector into a USB receptacle on the computer.

2.1.2. P/N 8090090 Follow the manufacturers' instructions to install and configure the Adapter.

Figure 8: RS-232 Diagnostic Harness Connections





MGM Brakes

A Division of Indian Head Industries, Inc.

TECHNICAL BULLETIN

SUBJECT: EB 11-001 e-Stroke Diagnostic Program Users Guide

2.2. SAE J1939 Diagnostic Connection:

Diagnostic Harness P/N 8290304 and Adapter Harness P/N 8090097 connects the computer to the vehicle J1939 Diagnostic Port.

2.2.1. Connect P/N 8290304 Diagnostic Harness to the vehicle 9-Pin Diagnostic Port.

2.2.2. Note: Some 2009 & newer New Flyer applications will require the P/N 8290239 Adapter for connection to the 9-pin Diagnostic Connector. If the Select Port Window does not “Gray Out” when connected to the vehicle 9-Pin (Fig. 10-B) than the P/N 8290239 Adapter may be required.

2.2.3. Connect P/N 8290304 Diagnostic Harness to P/N 8090097 Adapter Harness.

2.2.4. Connect P/N 8090097 Adapter Harness to Computer USB Port.

2.2.5. P/N 8090097 Follow the manufacturers’ instructions to install and configure the Adapter.

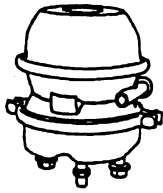
2.2.6. NOTE: The SAE J1939 PCAN diagnostic connection to the Laptop Based Diagnostic Program will not be functional for ECU firmware versions 3.26 and higher with 500 kbps configurations installed in the ECU.

3.0 Diagnostic Program Operation:

3.1. Double (left) Click the *e-Stroke Diagnostic Program Desktop Icon* to start the program.

Figure 9: e-Stroke Diagnostic Program Desktop Icon





MGM Brakes

A Division of Indian Head Industries, Inc.

TECHNICAL BULLETIN

SUBJECT: EB 11-001 e-Stroke Diagnostic Program Users Guide

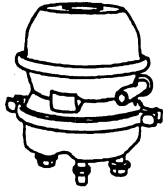
- 3.2. The appropriate COM port must be selected using the *Select Port* drop down window. See Figure 10-A.
- 3.2.1. The computer DB9 / Serial connector will typically operate as COM 1 where equipped. Typically COM 1 for “Tough Book” applications.
- 3.2.2. P/N 8090090 USB High Speed Serial Adapter will be assigned a COM port number when connected to the computer. The COM port assigned to the USB Adapter Harness can be looked up in the Device Manager.
- 3.2.3. The COM port does not need to be selected when the J1939 connection is used. The *Select Port* drop down window will “Gray Out” when the J1939 connection is active. See Figure 10-B.

Finding COM Port with the Device Manager:

To locate the Computers Device Manager follow these steps with the USB device plugged in to the computer.

Note: This instruction applies to most Windows applications.

1. Select the **Start Button**, then **Settings**, and then **Control Panel**.
2. Once the Control Panel Window is open select the **System Icon**.
3. Once the System Properties Window is open select the **Device Manager and or Hardware Tab**.
4. With the **Device Manager** open, locate the **Ports (COM & LPT)** item.
5. Left Click the **+ (Cross)** next to “Ports (COM & LPT)”.
6. All of the active COM ports will now be displayed with number assignments.
7. Find the COM port which lists the USB Adapter and note the COM number.
8. Reassign COM port number if USB adapter is not assigned COM 1-10.



MGM Brakes

A Division of Indian Head Industries, Inc.

TECHNICAL BULLETIN

SUBJECT: EB 11-001 e-Stroke Diagnostic Program Users Guide

3.3. **Update Brake Data:** Press the **Update Brake Data Button** to acquire and update the brake data. See Figure 10-E.

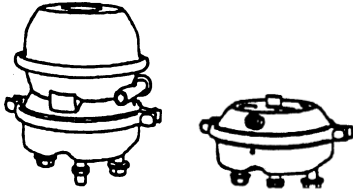
- Note that each time **the Update Brake Data Button** is **Pressed** the brake data is refreshed and replaces the previously displayed data.
- The displayed data must be saved if a record is required. Use the slider on the right of the window to navigate the report.
- Service Brake application must be held until Data Update is completed to display Pressure Value.

3.4. **Clear Brake Data:** Press the **Clear Brake Data Button** to clear the stored fault code history from the CCM. See Figure 10-F.

3.5. **Save Report:** Press the **Save** button to save a text report of the brake data. See Figure 10-C.

3.6. **Print Report:** The displayed brake data can also be printed by **Pressing** the **Print** button. See Figure 10-D.

- Note: Saved and Printed Brake Data will include a Date and Time Stamp at the beginning of the report.



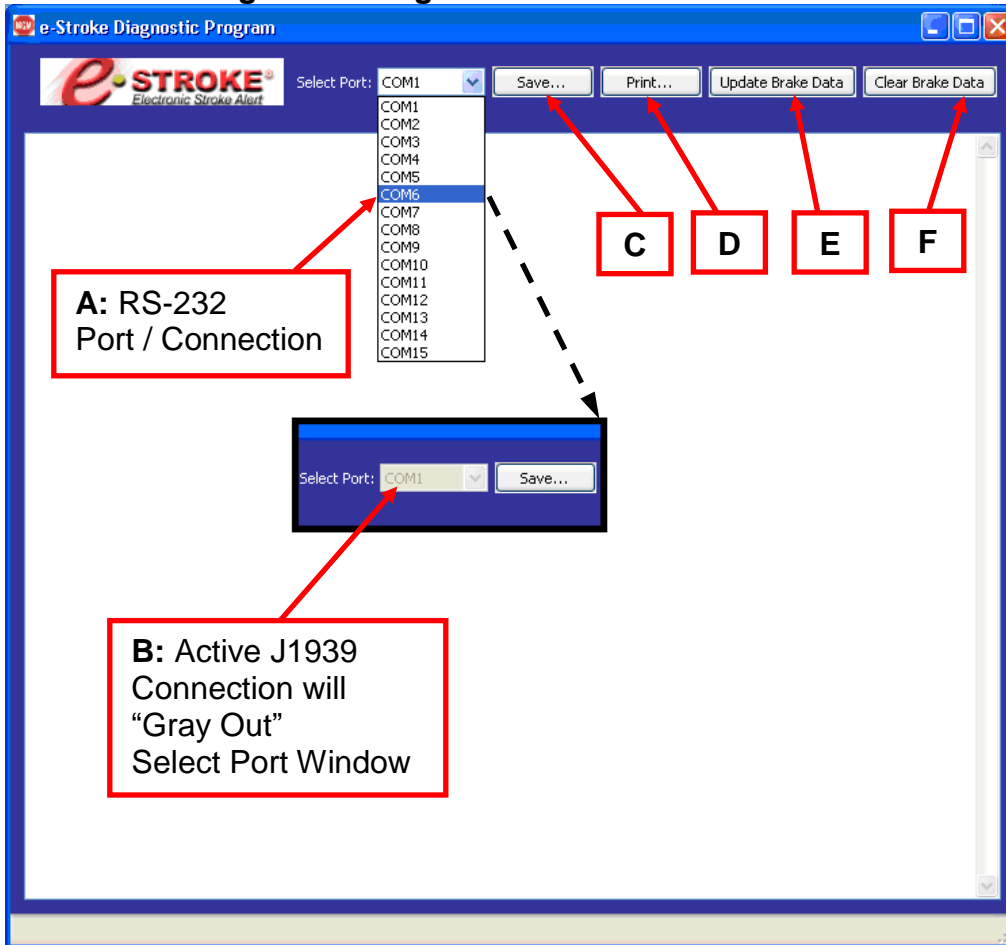
MGM Brakes

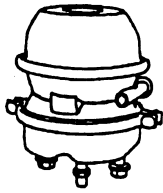
A Division of Indian Head Industries, Inc.

TECHNICAL BULLETIN

SUBJECT: EB 11-001 e-Stroke Diagnostic Program Users Guide

Figure 10: e-Stroke Diagnostic Program Interface





MGM Brakes

A Division of Indian Head Industries, Inc.

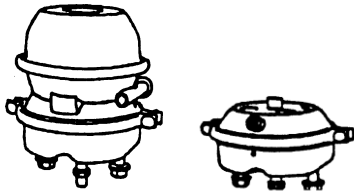
TECHNICAL BULLETIN

SUBJECT: EB 11-001 e-Stroke Diagnostic Program Users Guide

3.7. The e-Stroke Diagnostic Program has 1 display window which provides the following e-Stroke Brake & System information. See Figures 11, 12.

- **CCM / System Information** - *CCM Serial Number, Software Version Number, CCM Type, Pressure Scale.*
- **System Configuration** - *Axles with Brake Stroke Sensors, Axles with Lining Wear Sensors (Drum / Disc).*
- **Active Brake Status** – *Displays Current Active Brake Status & Disc Caliper Lining Clearance Status (Over-Tightened Lining).*
- **Stored Brake Fault History** – *Displays Non-Current Stored Fault Counts for Brake Status.*
- **Active Lining Wear Status** - *Displays Current Active Lining Status.*
- **Stored Lining Wear Fault History** – *Displays Non-Current Stored Fault Counts for Lining Sensors*
- **Brake Application Pressure** - *Displays Current Brake Application Pressure which is present as the data is updated.*
- **Stored Pressure Transducer Fault History** – *Displays Non-Current Stored Fault Counts for Pressure Transducer.*
- **SAE J1708 / J1939 Status** – *Displays status of SAE J1708 and J1939 connections when RS-232 connection is used.*

Note: When SAE J1939 is used for the diagnostic program connection, it is assumed that J1939 is operational and this status is not displayed.



MGM Brakes

A Division of Indian Head Industries, Inc.

TECHNICAL BULLETIN

SUBJECT: EB 11-001 e-Stroke Diagnostic Program Users Guide

Figure 11: Diagnostic Information Display

CCM / System / Configuration Information

Serial Number	3330003233
Software Version Number	3.25
Axles with drum brake stroke sensors	None
Axles with disc brake stroke sensors	1, 2,
Axles with wire loop brake lining wear sensors	None
CCM Type	Truck / Bus
Pressure Scale	100 PSI

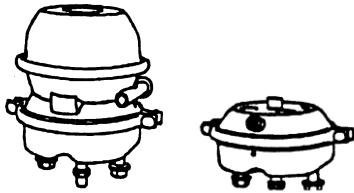
Active Brake and Caliper Lining Clearance Status

Brake actuator stroke status:	
Brake Stroke Axle 1 Left	Over-Stroke
Brake Stroke Axle 1 Right	OK (Normal Operation)
Brake Stroke Axle 2 Left	OK (Normal Operation)
Brake Stroke Axle 2 Right	OK (Normal Operation)

Stored Brake Fault History

Brake stroke fault occurrence counts:	
Brake Stroke Axle 1 Left	
Overstroke (FMI 0)	1
Non-functioning (FMI 1)	0
Sensor Error (FMI 4)	0
Dragging Brake (FMI 7)	0
Low Lining Clearance (FMI 13)	0
Brake Stroke Axle 1 Right	
Overstroke (FMI 0)	0
Non-functioning (FMI 1)	0
Sensor Error (FMI 4)	0
Dragging Brake (FMI 7)	0
Low Lining Clearance (FMI 13)	0
Brake Stroke Axle 2 Left	
Overstroke (FMI 0)	0
Non-functioning (FMI 1)	0
Sensor Error (FMI 4)	0
Dragging Brake (FMI 7)	0
Low Lining Clearance (FMI 13)	0
Brake Stroke Axle 2 Right	
Overstroke (FMI 0)	0
Non-functioning (FMI 1)	0
Sensor Error (FMI 4)	0
Dragging Brake (FMI 7)	0
Low Lining Clearance (FMI 13)	0

PCAN Adapter Initialized



MGM Brakes

A Division of Indian Head Industries, Inc.

TECHNICAL BULLETIN

SUBJECT: EB 11-001 e-Stroke Diagnostic Program Users Guide

Figure 12: Diagnostic Information Display

Active Lining Wear Status

Brake lining remaining %:	
Axle 1 Left	10%
Axle 1 Right	100%
Axle 2 Left	100%
Axle 2 Right	100%

Stored Lining Wear Fault History

Brake lining fault occurrence counts:	
Axle 1 Left	
Brake Lining at 0% (FMI 1)	0
Brake Lining at 10% (FMI 18)	1
Axle 1 Right	
Brake Lining at 0% (FMI 1)	0
Brake Lining at 10% (FMI 18)	0
Axle 2 Left	
Brake Lining at 0% (FMI 1)	0
Brake Lining at 10% (FMI 18)	0
Axle 2 Right	
Brake Lining at 0% (FMI 1)	0
Brake Lining at 10% (FMI 18)	0

Brake Application Pressure

Brake Application Pressure: 112.3 PSI

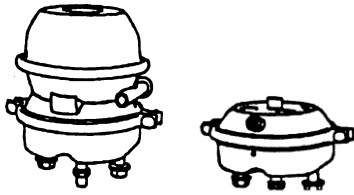
Stored Pressure Transducer Fault History

Brake Application fault occurrence count:
Pressure Transducer Fault (FMI 4) 0

SAE J1708 / J1939 Status (RS-232 Only)

J1708 status never active (Comm Not Used)
J1939 status active (Comm OK)

PCAN Adapter Initialized



MGM Brakes

A Division of Indian Head Industries, Inc.

TECHNICAL BULLETIN

SUBJECT: EB 11-001 e-Stroke Diagnostic Program Users Guide

4.0 Diagnostic Program HASH File Check Instruction:

- 4.1. The e-Stroke diagnostic program application file should be verified to ensure it has not been altered by checking the HASH file number prior to installing.
- 4.2. Download file to a location on your disk drive ie.. c:\temp\
- 4.3. Open a command prompt and enter the following commands:

Type → **cd c:\temp** → then press Enter

Type / Copy →

certutil -hashfile "8091202 rev. 03 v10.293.exe" sha512

→ then press Enter

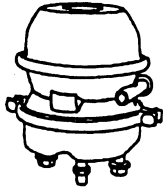
- 4.4. The command prompt will provide a HASH output number as shown in Figure 13.
- 4.5. Verify that the HASH number provided in the command prompt matches the following number for "8091202 rev. 03v10.29.exe"

**3334e2c13bd4b65d92b50321cd8e22792122bb303360c4316f2405c74d27d
30f4a748990f802de3ca473b8f64f9c365c076cfd4519501272706da3333ee2f
4390**

**HASH NUMBER
NEEDS TO MATCH**

Figure 13: Command Prompt HASH Example

```
Command Prompt
c:\Temp>cd c:\deployment
c:\deployment>cd c:\temp
c:\Temp>certutil -hashfile "8091202 rev. 03 v10.293.exe" sha512
SHA512 hash of 8091202 rev. 03 v10.293.exe:
334e2c13bd4b65d92b50321cd8e22792122bb303360c4316f2405c74d27d30f4a748990f802de3ca473b8f64f9c365c076cfd4519501272706da3333ee2f4390
CertUtil: -hashfile command completed successfully.
c:\Temp>
```



MGM Brakes

A Division of Indian Head Industries, Inc.

TECHNICAL BULLETIN

SUBJECT: EB 11-001 e-Stroke Diagnostic Program Users Guide

THIS DOCUMENT IS THE PROPERTY OF MGM BRAKES, DIVISION OF INDIAN HEAD INDUSTRIES INC. AND IS NOT FOR DISSEMINATION OR DISCLOSURE, IN WHOLE OR IN PART, FOR ANY PURPOSE OTHER THAN THAT FOR WHICH IT IS SUBMITTED, EXCEPT AS AUTHORIZED IN WRITING BY MGM BRAKES.